

---

**IMPLANTS ONLY**

---

# IMPLANTS ONLY

---

- ❑ Who are we?
- ❑ What do we do?
- ❑ What can we do for your laboratory to increase products and services that you can offer to your dentists?
- ❑ What can we do for your dental practice to increase products and services that you can offer to your patients?

# WHO ARE WE?

---

## ❑ Implants Only

- ❑ We are a small company that is staffed by
  - ❑ Board Certified Prosthodontist
  - ❑ Certified Dental Laboratory Technician
  - ❑ Dental Hygienist
  - ❑ Dental auxiliaries who each have more than 20 years of dental experience.
- ❑ Our vast experience, coupled with our state of the art laboratory technologies, allows us to offer you outstanding **implant and natural tooth** solutions.

# WHAT DO WE DO?

---

## ❑ Implants Only

- ❑ Produces custom abutments for implants
- ❑ Produces custom implant bridges
- ❑ Produces “All Ceramic” restorations for natural teeth.
  - ❑ Procera restorations for single teeth
  - ❑ Procera fixed partial dentures (bridges)

# WHAT CAN WE DO FOR YOU?

## ❑ Implants Only

- ❑ We offer our services to all dental laboratories that don't have the technical equipment we own, so that they can produce Procera restorations for their dental clients
- ❑ If your laboratory cannot produce Procera restorations for natural teeth or for dental implants, you can outsource your case to **Implants Only** so that we can assist you in the fabrication of copings, abutments and substructures

# PIB - TITANIUM

---

PIB - TITANIUM

# PROCERA IMPLANT BRIDGES (PIB)

- ❑ Procera Implant Bridges
  - ❑ Can be Titanium or Zirconium
  - ❑ Can be 2 units or 14 units
  - ❑ Zirconium can be shaded (4 shades)
  - ❑ Zirconium only to implant level
  - ❑ Titanium to implant or “multi-unit” abutment level
  - ❑ Must have accurate cast and pattern
  - ❑ Pattern must be acrylic

# PROCERA IMPLANT BRIDGES (PIB)

- ❑ Example of PIB, Titanium
- ❑ Pre Treatment
- ❑ Hopeless teeth
- ❑ Plan for full mouth extractions
- ❑ Upper denture, lower PIB



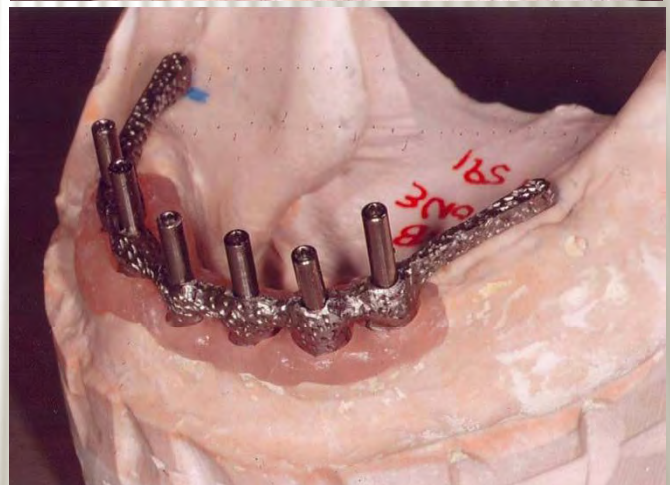
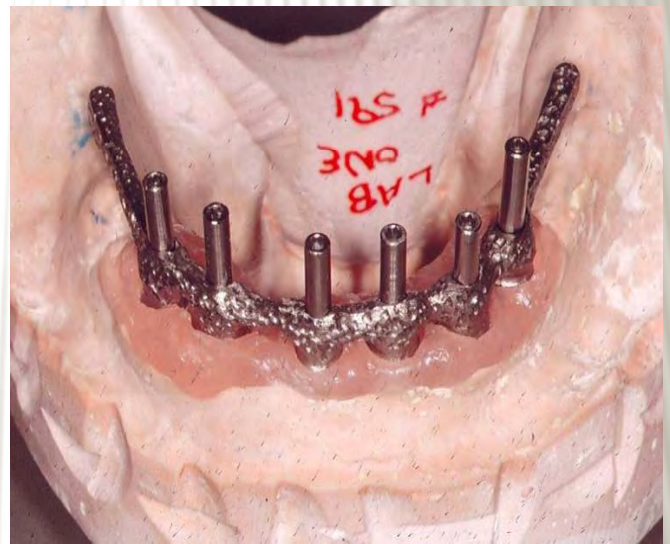
# PROCERA IMPLANT BRIDGES (PIB)

- ❑ Lower cast with acrylic pattern
- ❑ Pattern
  - ❑ Acrylic like “Duralay” or “GC Pattern Resin” or “Triad”
  - ❑ Waxing sleeves are used
  - ❑ Must fit cast accurately



# PROCERA IMPLANT BRIDGES (PIB)

- PIB
  - Titanium framework returned
  - Ready for denture teeth to be added



# PROCERA IMPLANT BRIDGES (PIB)

- ❑ PIB
  - ❑ Titanium Framework
  - ❑ Acrylic denture teeth and pink acrylic to process
  - ❑ Screw retained



# PROCERA IMPLANT BRIDGES (PIB)

- ❑ PIB
  - ❑ Titanium framework
  - ❑ Acrylic teeth and pink processing acrylic
  - ❑ Screw retained



# PIB – ZIRCONIUM, PARTIAL

---

PIB – ZIRCONIUM, PARTIAL

# PROCERA IMPLANT BRIDGES (PIB)

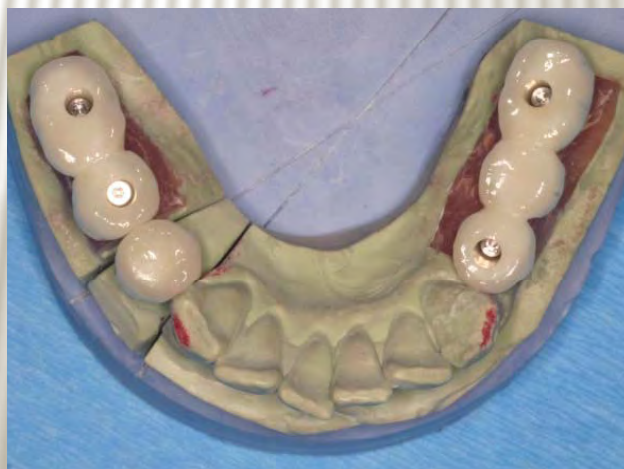
- ❑ PIB
  - ❑ 2 units, splinted
  - ❑ 3 unit bridge
  - ❑ On implants
  - ❑ Zirconium Oxide
  - ❑ Screw retained



# PROCERA IMPLANT BRIDGES (PIB)

## □ PIB

- 19 to 21 PIB, Zirconium Oxide, screw retained
- 28 Procera, Zirconium Oxide crown
- 29 to 30 PIB, Zirconium Oxide, screw retained



# PROCERA IMPLANT BRIDGES (PIB)

- PIB
  - 28 single Procera crown
  - 19 to 21 PIB
  - 29 to 30 PIB
  - PIBs are screw retained with cotton in access holes and flow composite resin sealing holes



# PROCERA IMPLANT BRIDGES (PIB)

- ❑ PIB
  - ❑ 18 to 19
  - ❑ Zirconium Oxide
  - ❑ Splinted, screw retained
  - ❑ Limited inter-occlusal space



# PROCERA IMPLANT BRIDGES (PIB)

- ❑ PIB
  - ❑ 18 to 19
  - ❑ Zirconium Oxide
  - ❑ Splinted, screw retained
  - ❑ Limited interocclusal space



# PROCERA IMPLANT BRIDGES (PIB)

- ❑ PIB
  - ❑ 18 to 19
  - ❑ Zirconium Oxide
  - ❑ Splinted, screw retained
  - ❑ Limited interocclusal space



# PIB – ZIRCONIUM, FULL

---

PIB – ZIRCONIUM, FULL

# PROCERA IMPLANT BRIDGES (PIB)

- PIB
  - Fully edentulous lower arch
  - Zirconium Oxide
  - Screw retained



# PROCERA IMPLANT BRIDGES (PIB)

- PIB
  - Zirconium Oxide framework
    - Try in
    - Additional jaw relationship record



# PROCERA IMPLANT BRIDGES (PIB)

- PIB
  - Zirconium Oxide framework
  - Screw retained



# PROCERA IMPLANT BRIDGES (PIB)

- ❑ PIB
  - ❑ Zirconium Oxide framework
  - ❑ Delivered
    - ❑ Torque
    - ❑ Cotton and flow composite in anterior screw holes
    - ❑ PVS in posterior screw holes



# UPPER PIB, LOWER OVERDENTURE

- ❑ The mandibular ridge is atrophic
- ❑ The patient can't afford more than two implants
- ❑ She wants a “stable” overdenture, one that has minimal “lift” in the back

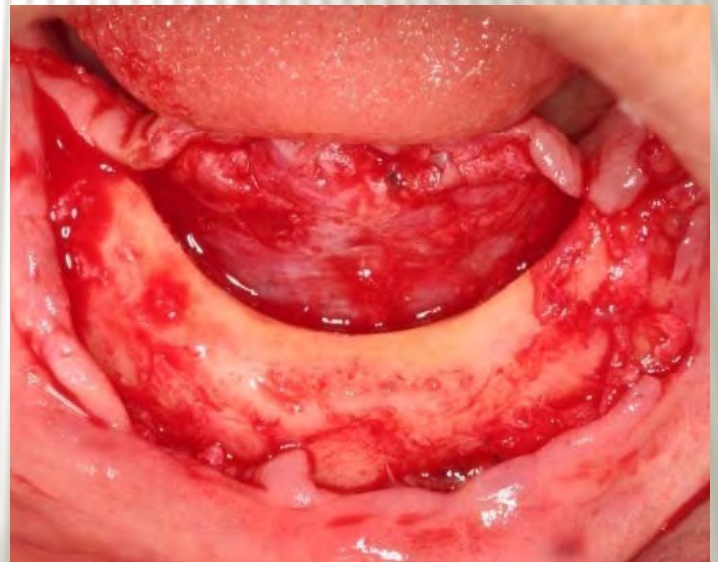


# PIB-ZIRCONIUM AND OVERDENTURE

PIB-ZIRCONIUM AND OVERDENTURE

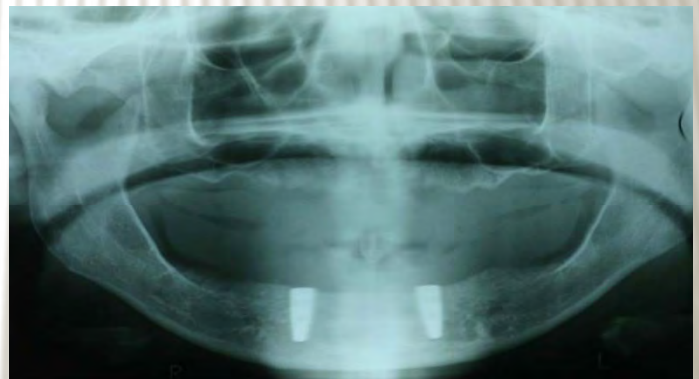
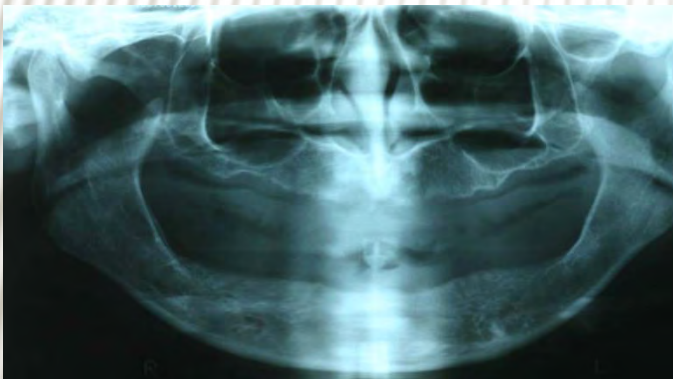
# UPPER PIB, LOWER OVERDENTURE

- ❑ The “knife edge” ridge is exposed
- ❑ The bone is “tabled” to a flat surface
- ❑ This would be a great case for 5 anterior mandible implants for a “fixed” restoration, but the patient only wants removable (cost)

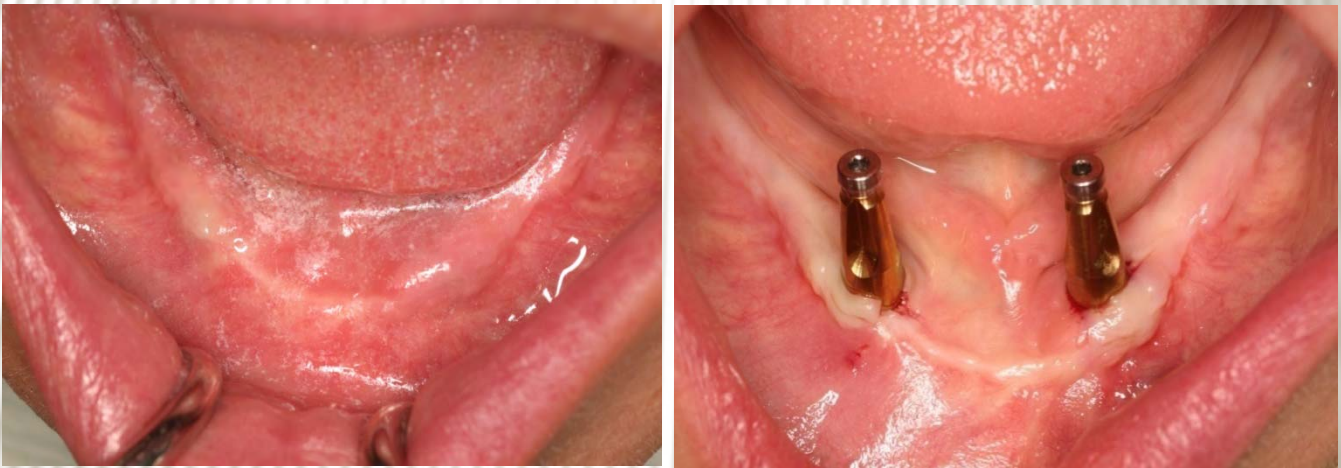


# UPPER PIB, LOWER OVERDENTURE

- The “pre” and “post” radiographs show minimal reduction of bone in the anterior mandible



# UPPER PIB, LOWER OVERDENTURE



- ❑ The implant site healed for two months. After healing, the implants were exposed
- ❑ Impression posts are placed and a final impression is made

# UPPER PIB, LOWER OVERDENTURE



- ❑ A cast bar was made that attaches directly to the two implants
- ❑ There are no intermediary abutments
- ❑ The bar has 4 “Locator” attachments
- ❑ Implants Only can now scan and make this type of bar

# UPPER PIB, LOWER OVERDENTURE

- The denture is relieved in the area of the bar, in preparation for picking up the attachments and relining the lower denture



# UPPER PIB, LOWER OVERDENTURE



- ❑ The “Locator” attachment on the left, is as it comes from the manufacturer (Zest)
- ❑ The one next to it has been abraded with aluminum oxide
- ❑ After abrading the attachment housing, the housing is painted with a “Metal Primer”
- ❑ After priming, the metal housings are coated with a thin wash of auto-polymerizing acrylic (Jet)

# UPPER PIB, LOWER OVERDENTURE



- ❑ The metal housings, coated with auto-polymerized acrylic, are seated on the bar
- ❑ The relieved denture is loaded with auto-polymerizing acrylic (Jet Pink) and seated over the bar
- ❑ It is best to block out around the bar with Play-Doh to prevent the denture from locking under the bar
- ❑ The patient bites in occlusion, lightly
- ❑ The processing caps are changed to retentive elements

# UPPER PIB, LOWER OVERDENTURE

- ❑ Upper denture
- ❑ Lower overdenture on “Locator” bar



# UPPER PIB, LOWER OVERDENTURE



- ❑ Upper denture
- ❑ Lower overdenture

# UPPER PIB, LOWER OVERDENTURE

- Note the upper anterior available bone



# UPPER PIB, LOWER OVERDENTURE

- ❑ Upper implants are placed
- ❑ Nobel Active



# UPPER PIB, LOWER OVERDENTURE

- Denture relined with “Coe Soft”



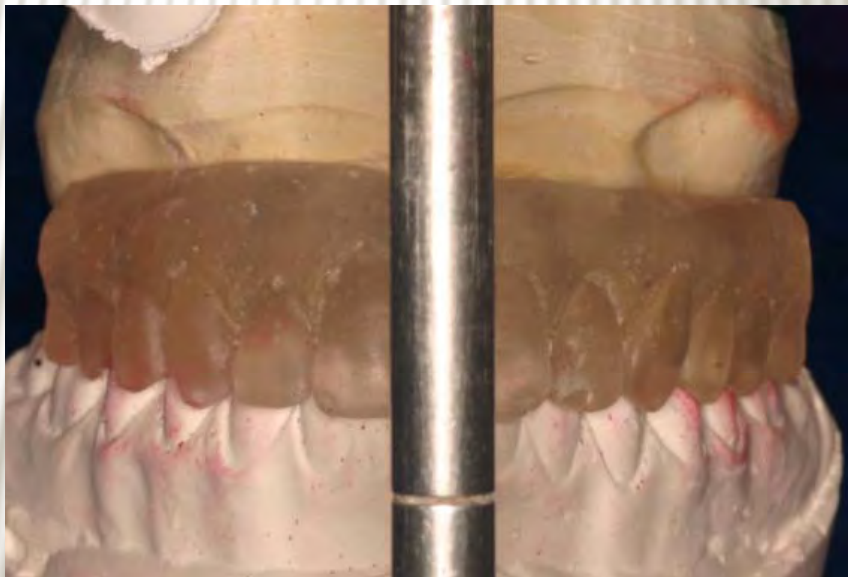
# UPPER PIB, LOWER OVERDENTURE

- ❑ After healing, impressions are made
- ❑ An acrylic pattern is made and tried in
- ❑ Vertical dimension and occlusal relationship is confirmed



# UPPER PIB, LOWER OVERDENTURE

- ❑ The pattern is used to “remount” the upper cast
- ❑ Important note:
  - ❑ Pattern needs to be made of acrylic



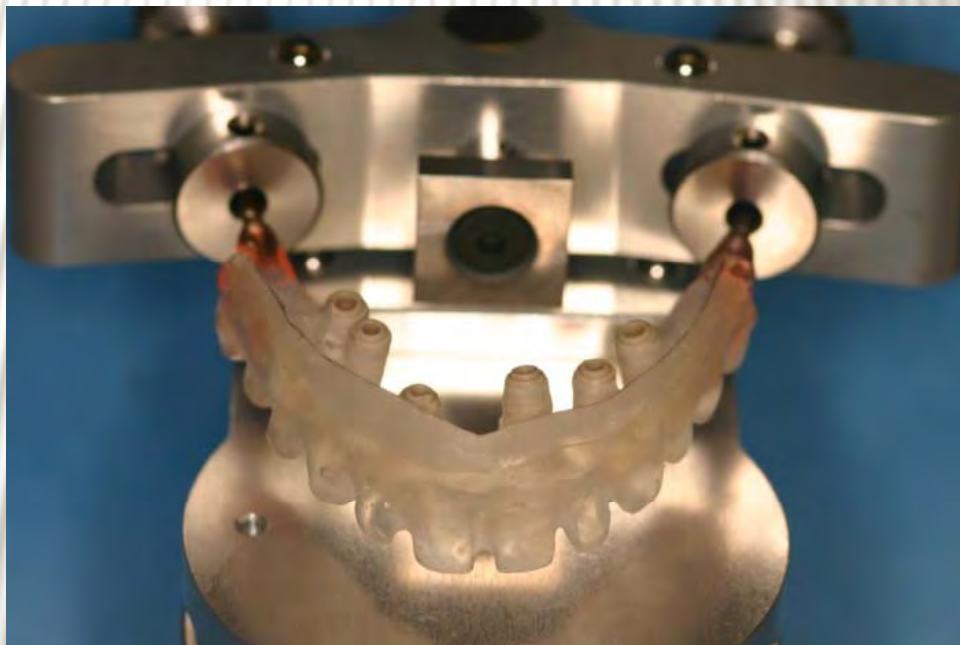
# UPPER PIB, LOWER OVERDENTURE

- The pattern is “cut back” for porcelain space



# UPPER PIB, LOWER OVERDENTURE

- ❑ The pattern is placed in the “Forte” and scanned



# UPPER PIB, LOWER OVERDENTURE

- From the pattern, a Procera Implant Bridge (PIB) Zirconium Oxide framework is created



# UPPER PIB, LOWER OVERDENTURE

- The framework is returned to the master cast



# UPPER PIB, LOWER OVERDENTURE

- Porcelain will be applied consistent with previous tooth arrangement (a denture set up)



# UPPER PIB, LOWER OVERDENTURE

- Porcelain application in process



# UPPER PIB, LOWER OVERDENTURE

- ❑ Final restorations
  - ❑ Upper
    - ❑ Fixed
    - ❑ PIB Zirconium Oxide
    - ❑ Screw retained
  - ❑ Lower
    - ❑ Overdenture
    - ❑ Locator bar



# UPPER PIB, LOWER OVERDENTURE

---



- ❑ Treatment completed
- ❑ Upper PIB
  - ❑ Zirconium Oxide
  - ❑ Screw retained